

AMC GRAM



Andersen Air Force Base Passenger Travel Information



734th Air Mobility Squadron

HAF A ADAI!

Terminal Hours: 0700 – 2100L Daily
Passenger Service Center: (671) 366-5165 DSN: 315-366-5165
Passenger Service FAX: (671) 366-3984 DSN: 315-366-3984
24 Flight Information: (671) 366-2095
Email: spacea.signup@us.af.mil

 www.facebook.com/AndersenPassengerTerminal

www.andersen.af.mil/units/734ams/index.asp

AMC Travel Info: www.amc.af.mil/amctravel



U.S. AIR FORCE

Dear Fellow Travelers,

I want to take this opportunity to welcome you to the AMC Passenger Terminal at Andersen Air Force Base, Guam. We are committed to providing you with the best possible service. Our Passenger Service Agents and Aircrews are dedicated professionals who take great pride in what they do.

Let us know if you have any questions or concerns during your travels. Passenger terminal personnel and AMC leadership at this facility are your best avenues for answers to your questions and concerns. Please give us the opportunity to address your issues. The comment form below is the direct line to passenger terminal leadership. Please place your comment form in the drop box provided. Another option you have is to use the Interactive Customer Evaluation (ICE) form found at <http://ice.disa.mil>. This venue allows you to leave comments for any AMC terminal.

RUSSELL D. GOHN, Lt Col, USAF
Commander, 734th Air Mobility Squadron

Military Lodging Listing

Andersen Gateway Inns & Suites: DSN - 362/(671)979-5501 (VERY LIMITED)/\$80 Family Room/\$60 Single Room
U.S. Naval Station Guam Gateway Inns & Suites: (671) 339-5259/\$70 Suite (3 person max)/\$60 Single Room/\$139 Family Homes

Civilian Hotel Listing*

Pacific Bay Hotel	(671) 649-8001	Pacific Star	(671) 649-7827
Palm Ridge	(671) 472-3001	Hilton Hotel	(671) 646-1835
Santa Fe On The Bay	(671) 647-8855	Bay View	(671) 646-2300
Grand Plaza	(671) 649-0630	Hyatt Regency	(671) 647-1234
Bay View Hotel	(671) 646-2300	Pacific Island Club	(671) 646-9171
Fiesta Hotel	(671) 646-5881	Holiday Resort	(671) 647-7272
Royal Orchid Hotel	(671) 649-2000	Sheraton Hotel	(671) 646-2222

Ground Transportation

SAAM Shuttle	(671) 689- SSAM
MIKI Taxi	(671) 646 - 2444
Independent Taxi	(671) 888 - 9959
Wave Taxi	(671) 888 - 1042
Dragon	(671) 888- 7140
Stroll Guam	(671) 647- 8765
Eduardo's Taxi	(671)888-2849

Terminal Amenities

National Car Rental: AAFB 653-7368
AAFB Passenger Terminal Museum, Children's Play room
Nursery, Family Lounge, Business center, and Special
Lounge for O-6/GS-15/E-9 (Also, Coin Assist and Blue Bark
Passengers)

Quick Reference Telephone Numbers

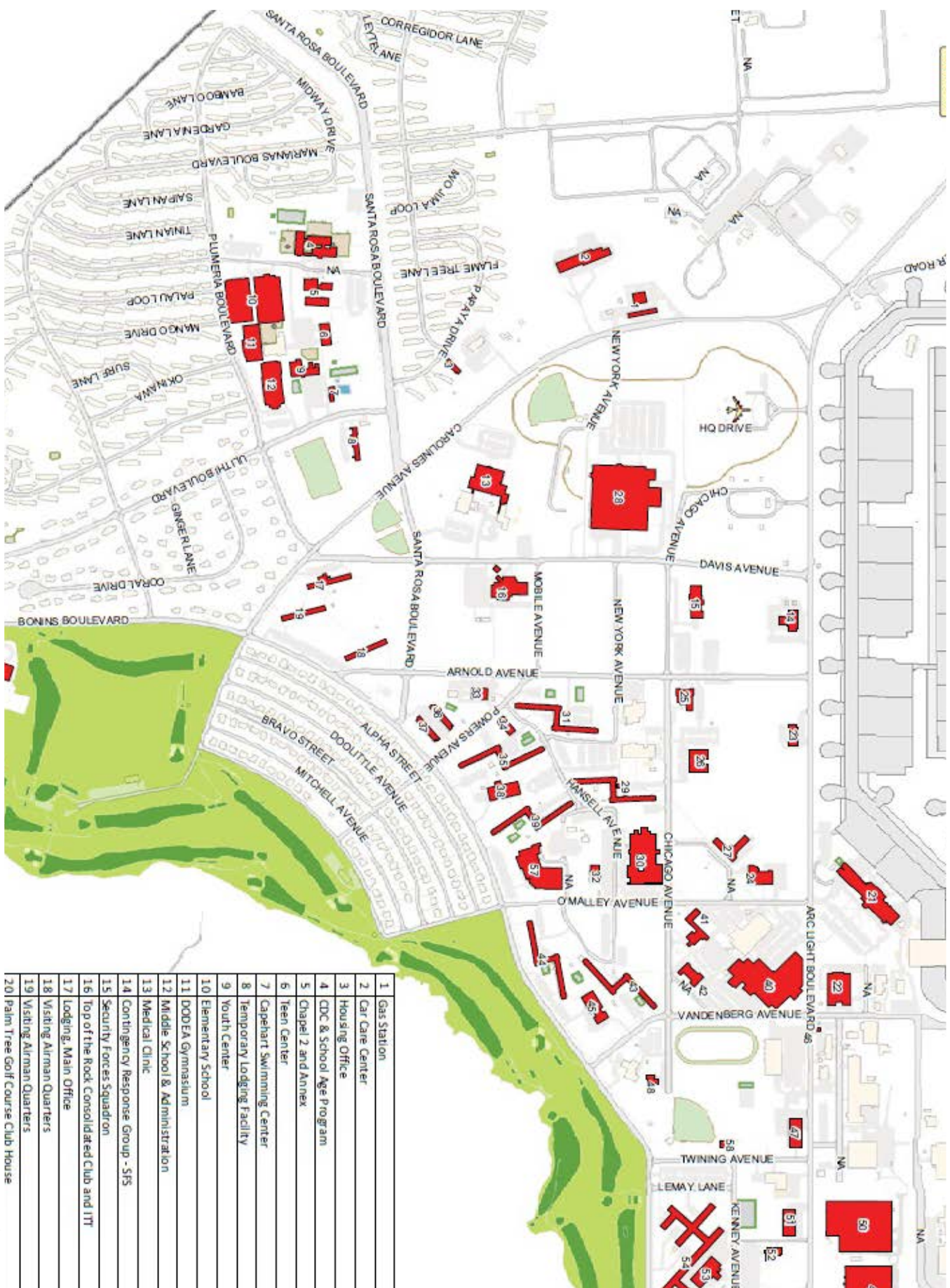
Base Operator: 366-1110	American Red Cross: 366-6270
Base Exchange (BX): 653-1141	DZSP 21: 366-2239
Chaplin Services: 366-6139	USO (At the Royal Orchid Hotel): 647-4876
Law Enforcement Desk: 366-2910	AFRC: 366-8136
Visitors Center (Main Gate): 366-4230	Information, Tickets & Travel: 366-1476
36 th Med Group Clinic: 366-9355	Outdoor Recreation: 366-5197
Dining Facility: 366-6368	Top of the Rock Enlisted Club: 366-6166

*Some hotels on island can be booked by Andersen Gateway to provide you with better rates

"This does not constitute endorsement by AMC or the United States Air Force"

Si Yu'us Ma'ase!

Upon check-in please inform agents of any unique requirements associated with hearing impairment, asthma, pacemakers etc. so we can better assist you.



- 1 Gas Station
- 2 Car Care Center
- 3 Housing Office
- 4 CDC & School Age Program
- 5 Chapel 2 and Annex
- 6 Teen Center
- 7 Capehart Swimming Center
- 8 Temporary Lodging Facility
- 9 Youth Center
- 10 Elementary School
- 11 DODEA Gymnasium
- 12 Middle School & Administration
- 13 Medical Clinic
- 14 Contingency Response Group - SFS
- 15 Security Forces Squadron
- 16 Top of the Rock Consolidated Club and ITT
- 17 Lodging, Main Office
- 18 Visiting Airman Quarters
- 19 Visiting Airman Quarters
- 20 Palm Tree Golf Course Club House